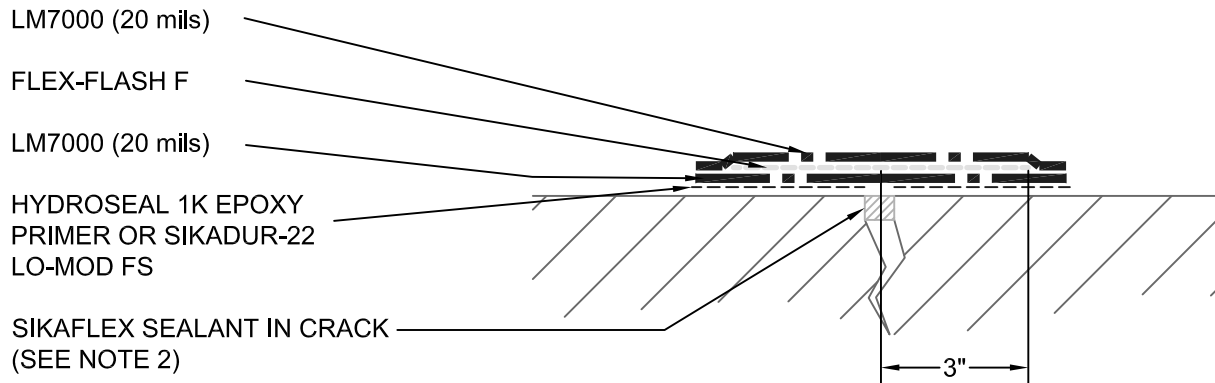
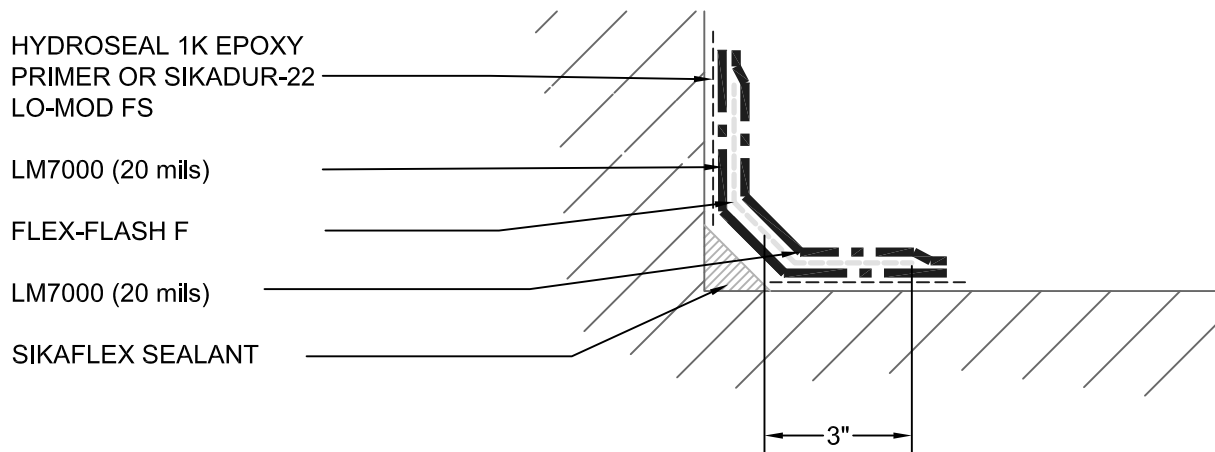


DETAIL COAT OVER CRACK/JOINT



TRANSITION DETAIL COAT



NOTES:

1. REFER TO LM7000 TECHNICAL DATA SHEET FOR FURTHER INFORMATION
2. CRACKS BETWEEN $\frac{1}{16}$ " - 1" IN WIDTH MUST BE ROUTED TO BE AT LEAST $\frac{1}{4}$ " X $\frac{1}{4}$ " AND THEN CAULKED OR GROUTED PROPERLY.
3. FULL APPLICATION OF LM7000 SHOULD BE INSTALLED AS SOON AS POSSIBLE. REFER TO AMERICAN HYDROTECH'S PUBLISHED GUIDELINES FOR FURTHER INFORMATION ON RECOAT WINDOW



Liquid Membrane
7000

AMERICAN HYDROTECH, INC.

DETAIL COAT
CRACKS AND TRANSITIONS

SCALE: NONE
DATE: 05/24

LM-2