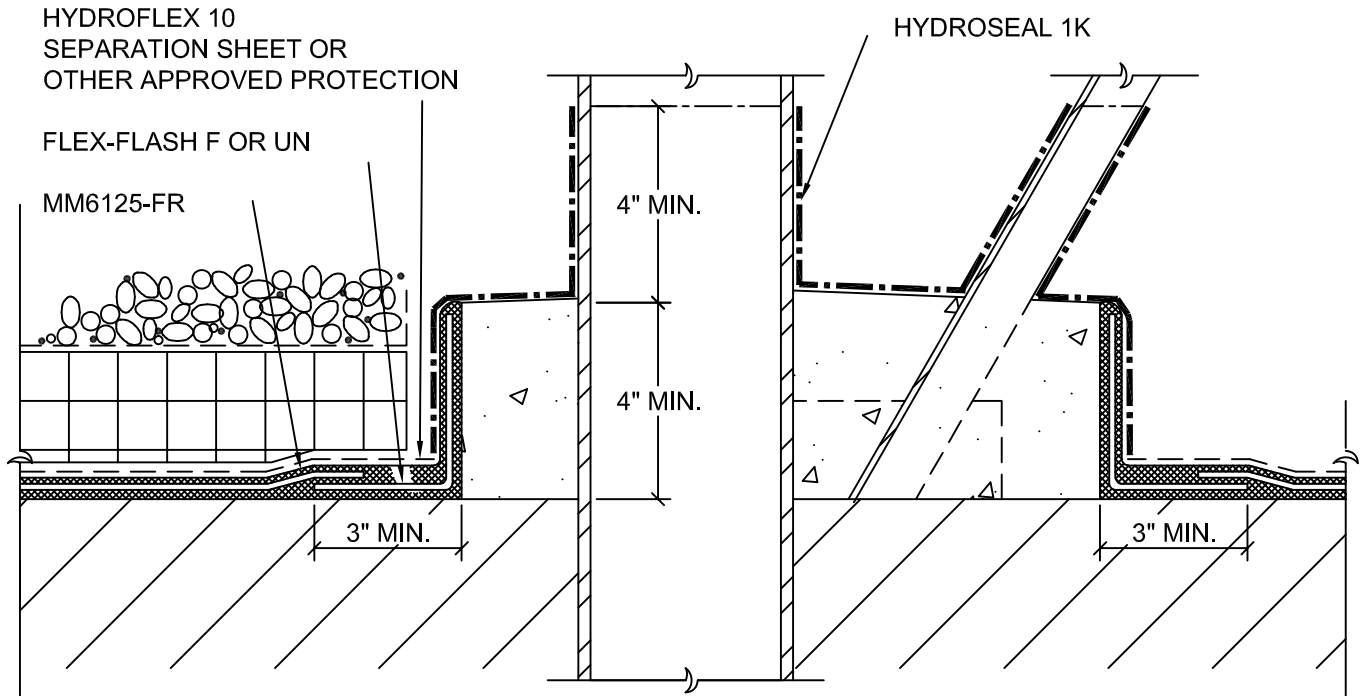


FOR COMPLEX CLUSTERED
IRREGULAR SHAPED PENETRATIONS
REQUIRING THE USE OF
HYDROSEAL 1K, IT WILL BE
NECESSARY TO ENCLOSE THE
PENETRATIONS IN CONCRETE
CURBS.



NOTES:

1. PENETRATION SURFACE MUST BE CLEAN AND FREE OF ALL RUST AND OTHER CONTAMINANTS, IN ADDITION TO WIPING W/SURFACE CONDITIONER FOR PROPER ADHESION OF MM6125.
2. IN COVERED/BURIED CONDITIONS, THE FLASHING DETAIL SHOULD EXTENDED AS HIGH AS POSSIBLE. FLASHING MUST BE TERMINATED AT OR ABOVE OVERBURDEN LEVEL AND NO LESS THAN 8" ABOVE SUBSTRATE.
3. REFER TO DETAIL HS1K-1 FOR THE PROPER APPLICATION OF HYDROSEAL 1K



**Monolithic
Membrane
6125-FR**
WITH HYDROSEAL 1K

AMERICAN HYDROTECH, INC.

**COMPLEX CLUSTERED IRREGULAR
SHAPED PENETRATIONS**

SCALE: NONE
DATE: 06/08/23

HS1K-4C