

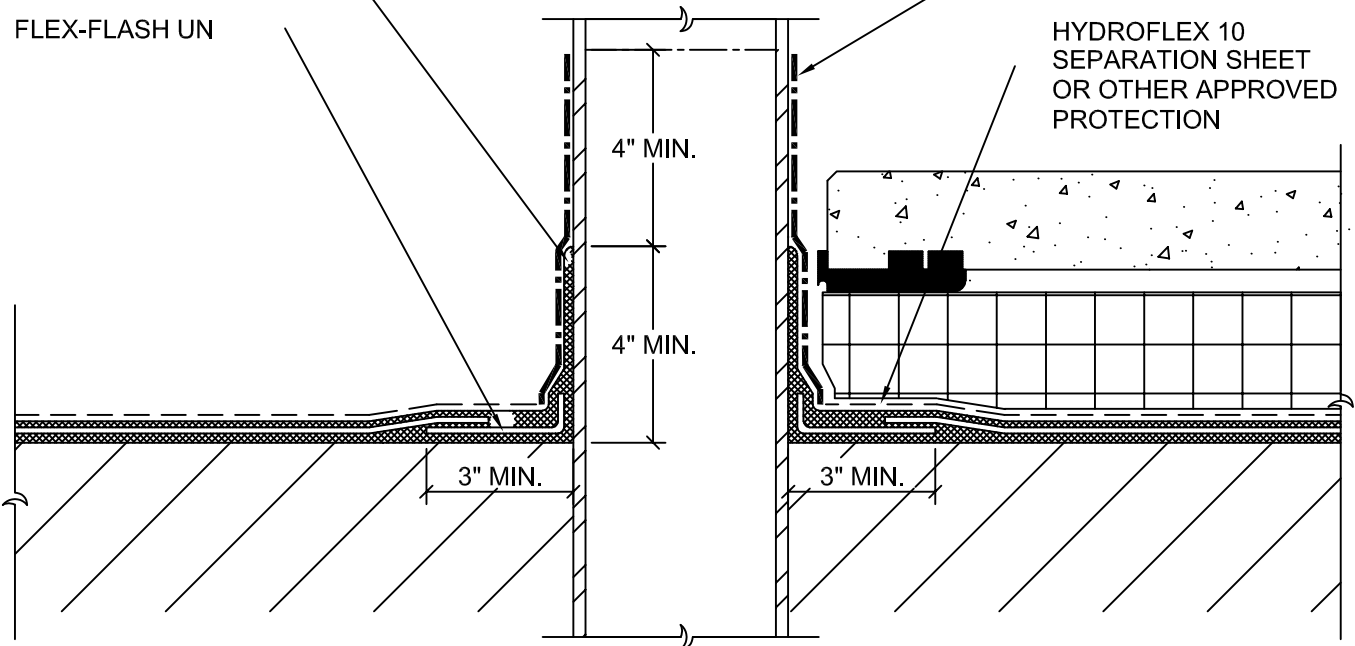
IRREGULAR SHAPED PENETRATIONS REQUIRING THE USE OF HYDROSEAL 1K CAN INCLUDE COLUMNS, ANGLES, DAVITS, SQUARE TUBE STEEL, ETC. LIGHTER GAUGE DUCT/PIPING SUPPORTS ARE NOT APPROPRIATE AND SHOULD BE PLACED ON BALLAST BLOCKS.

MONOLITHIC MEMBRANE 6125

FLEX-FLASH UN

HYDROSEAL 1K

HYDROFLEX 10 SEPARATION SHEET OR OTHER APPROVED PROTECTION



NOTES:

1. PENETRATION SURFACE MUST BE CLEAN AND FREE OF ALL RUST AND OTHER CONTAMINANTS, IN ADDITION TO WIPING W/SURFACE CONDITIONER FOR PROPER ADHESION OF MM6125.
2. IN COVERED/BURIED CONDITIONS, THE FLASHING DETAIL SHOULD EXTENDED AS HIGH AS POSSIBLE. FLASHING MUST BE TERMINATED AT OR ABOVE OVERBURDEN LEVEL AND NO LESS THAN 8" ABOVE SUBSTRATE.
3. USE LARGEST SHEETS OF UNCURED NEOPRENE POSSIBLE. WHEN POSSIBLE, HOLES/SLITS SMALLER THAN THE PENETRATION SHOULD BE CUT IN THE CENTER OF THE SHEET OF NEOPRENE AND THE SHEET PULLED DOWN OVER THE PENETRATION.
4. REFER TO DETAIL HS1K-1 FOR THE PROPER APPLICATION OF HYDROSEAL 1K



**Monolithic Membrane**  
**6125-FR**  
WITH HYDROSEAL 1K

**AMERICAN HYDROTECH, INC.**

**IRREGULAR SHAPE PENETRATIONS  
CAST INTO DECK**

SCALE: NONE  
DATE: 06/08/23

HS1K-4B