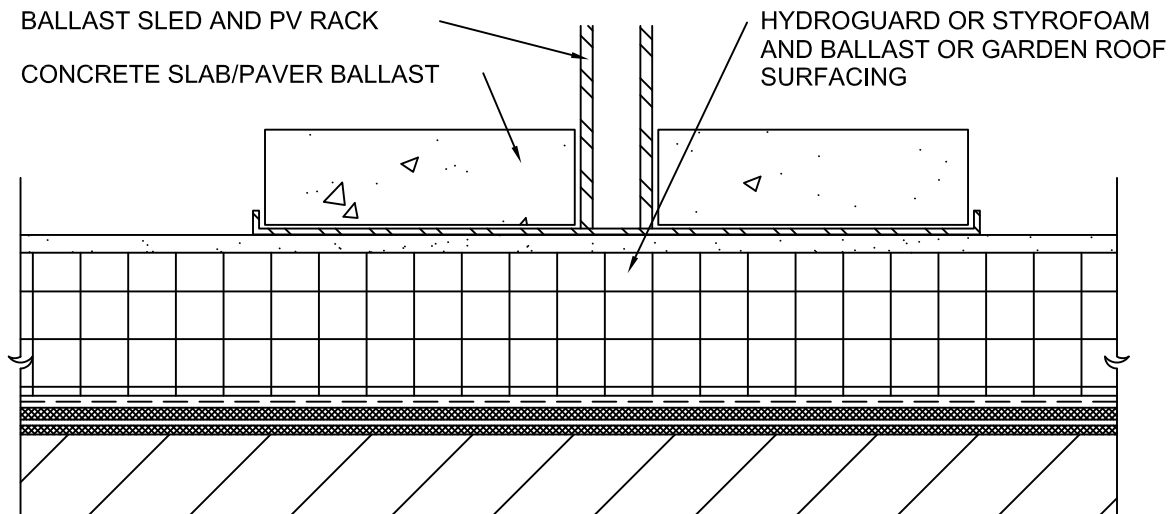


TYPICAL PIPE STANDOFF



TYPICAL BALLAST SLED

NOTES:

1. PENETRATION MUST BE PROPERLY SECURED TO STRUCTURE TO PREVENT VERTICAL OR LATERAL MOVEMENT.
2. ALL PIPE MATERIALS (PVC, COPPER, BRASS) REQUIRE ROUGHENING/SANDING, IN ADDITION TO WIPING W/SURFACE CONDITIONER FOR PROPER ADHESION OF MM6125. METAL PIPES MUST BE FREE OF ALL OIL AND RUST.
3. IN COVERED/BURIED CONDITIONS, THE FLASHING DETAIL SHOULD EXTENDED AS HIGH AS POSSIBLE. FLASHING MUST BE TERMINATED AT OVERBURDEN LEVEL AND NO LESS THAN 8" ABOVE SUBSTRATE.
4. PV PANEL OR SUPPORT RACK SUPPLIER MUST BE CONSULTED FOR PROPER INSTALLATION AND ACCESSORY INFORMATION.



**Monolithic
Membrane
6125-FR**
ROOFING SYSTEMS

AMERICAN HYDROTECH, INC.

**TYPICAL PHOTOVOLTAIC PANEL
RACK INSTALLATION OPTIONS**

SCALE: NONE
DATE: 06/01/19

R-7D