



A SIKA COMPANY

The
Ultimate Assembly[®]
with **Bison Wood Tiles and Planter Cubes**



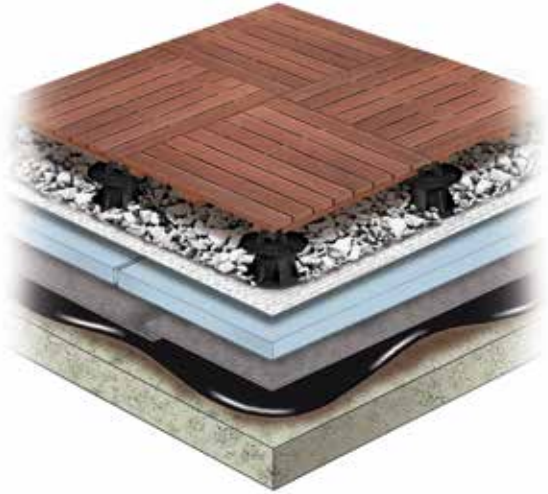
NATURAL BEAUTY FOR PLAZAS & ROOF DECKS

WOOD TILES AND PLANTER CUBES

Transform your outdoor space with Bison Wood Tiles as marketed by American Hydrotech, Inc. Wood Tiles are an alternative to architectural concrete pavers as part of Hydrotech's Ultimate Assembly®. Ideal for use with Hydrotech Adjustable Pedestals, Wood Tiles can be laid in a parquet pattern, linear pattern or mixed with concrete pavers for a unique look. These wood tiles exhibit excellent resistance to weather and provide architectural charm and warmth to a roof deck.

All Wood Tiles are made from tropical hardwoods and are ideal long-lasting, low maintenance deck solutions. They can be periodically treated with oil to preserve and enhance their original color or left untreated to develop a natural aged finish. Most tiles are available with a smooth or ribbed, scuff resistant surface and are constructed with stainless steel screws.

Hydrotech can provide a single source warranty on Wood Tile and Planter Cubes when used in an Ultimate Assembly. For full details, please contact Hydrotech.



IPE



WT-IPE-24*

Dimensions:
Weight:

Surface: Smooth or Ribbed
23 7/8" x 23 7/8" x 1.69"
24 lbs.

WT-IPE-48

Dimensions:
Weight:

Surface: Smooth or Ribbed
47 15/16" x 23 7/8" x 1.69"
48 lbs.

Weight psf:
Fire Rating:
Color:
Janka Hardness Rating:

6 lbs.
Class At
Brown
3,680 lbs.

CUMARU



WT-CUMARU-24-8**

Dimensions:
Weight:

Surface: Smooth
23 7/8" x 23 7/8" x 1.69"
20 lbs.

WT-CUMARU-48-8**

Dimensions:
Weight:

Surface: Smooth
47 15/16" x 23 7/8" x 1.69"
43 lbs.

Weight psf:
Fire Rating:
Color:
Janka Hardness

6 lbs.
Class At
Golden Brown
Rating: 3,540 lbs.

Notes: Wood is a natural product, therefore color variation should be expected. The number of slats may vary (unless indicated) and will be determined by availability at time of order. The Ultimate Assembly and Wood Tiles is not intended for vehicular traffic. Please contact Hydrotech for specifics.

** Also available in FSC, call to confirm

* Available in FSC, 8 plank smooth, call to confirm



Rich Tree Open Kitchens - Skokie, IL



Tower Collection - Honolulu, HI

GARAPA



WT-FSC-GARAPA-24

Surface: Ribbed
 Dimensions: 23 7/8" x 23 7/8" x 1.69"
 Weight: 20 lbs.
 Weight psf: 5 lbs.
 Fire Rating: Class A†
 Color: Golden brown
 Janka Hardness Rating: 1,630 lbs.
 Note: FSC Certified, Limited availability

IPE - CUSTOM



WT-IPE-CUSTOM

Surface: Smooth
 Dimensions: 72" x 23 7/8" x 1.69"
 96 1/16" x 23 7/8" x 1.69"
 Weight psf: 6 lbs.
 Fire Rating: Class A†
 Color: Brown
 Janka Hardness Rating: 3,680 lbs.
 Note: Please inquire for availability and options.

OTHER EXOTIC HARDWOODS

Other specialty hardwoods are available from time to time and their availability and lead time is subject to change. Some examples of additional species include:

- FSC Ipe
- FSC Cumaru
- Bamboo
- Itauba
- Tigerwood

Please contact Hydrotech for additional information.

CUBE SITE FURNISHINGS

With modular Bison Cubes as marketed by American Hydrotech Inc., the choice is yours! Cubes make it easy to design a comfortable and beautiful environment. Cubes integrate seamlessly with the Hydrotech Wood Tile Assembly and Pedestals. Instead of installing a Wood Tile, set a Cube in its place to use as a planter or add an Ipê top for seating and storage. A listing of Cube material options, dimensions, finishes and colors follows on the next page.

- Available in powder coated aluminum and Ipê wood
- Custom colors, sizes and materials available
- Aluminum is lightweight and exceptionally durable
- Made in the USA (Powder Coat Aluminum Cubes)
- May contribute to LEED points
- Commercial quality



† Meets and exceeds ASTM E108-07a Class A Spread of Flame Test



Seaport Parcel K - Boston, MA



CATO Institute - Washington, DC



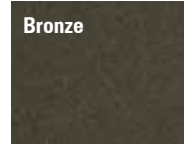
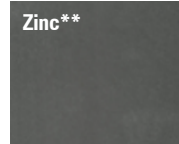
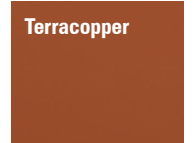
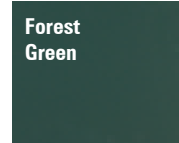
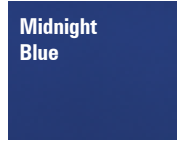
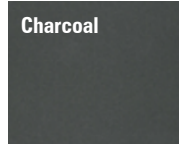
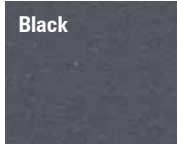
Aluminum Cubes

Dimensions†

24"l x 24"w x 20"h	24"l x 72"w x 20"h
24"l x 24"w x 24"h	24"l x 72"w x 24"h
24"l x 24"w x 36"h	24"l x 72"w x 36"h
48"l x 24"w x 20"h	24"l x 96"w x 20"h
48"l x 24"w x 24"h	24"l x 96"w x 24"h
48"l x 24"w x 36"h	24"l x 96"w x 36"h
48"l x 48"w x 20"h	48"l x 48"w x 36"h
48"l x 48"w x 20"h	
48"l x 48"w x 36"h	

Description

Standard: Drain holes & irrigation sleeves
Warranty: Limited 5 year warranty on cube structure. Limited 5 year warranty on powder coated finishes.
Note: Recycled raw material up to 28% recycled content, low VOC sealants, low VOC powder coat finishes. Cubes available in custom colors, sizes, stainless steel, and weathered steel.



Notes: Reproduced colors may vary. Please call for a color sample.
 **Zinc is a finish upcharge



Ipê Hardwood Cubes

Dimensions†

24"l x 24"w x 17"h	Weight
48"l x 24"w x 17" (double)	64 lbs
	128 lbs

Custom Sizes Available

Description

Standard: Liner included
Warranty: Limited 5 year warranty on structure.



Ipê Tops

Dimensions†

24"l x 24"w x .75" (single)	Weight
48"l x 24"w x .75" (double)	23 lbs
	48 lbs

Top adds .75" to cube height
Left: Single Top on Ipê Cube

Above: Double Top on two Ipê Cubes
Below: Single Top on Silver Finish Aluminum Cube



Note: When ordering specify for wood or aluminum cube



Tray

Dimensions†

24"l x 12"w x 1.69" (single)	Weight
48"l x 12"w x 1.69" (double)	3.5 lbs
	6.5 lbs

Note: An opportunity to mix and match natural textures using the same pedestal system.

†Dimensions are nominal



Davita World Headquarters - Denver, CO



Hilton Hukalani Waikiki - Honolulu, HI

HYDROTECH ADJUSTABLE PEDESTALS

PRODUCT INFORMATION

- Made in the USA
- Contains 20% Post-Industrial Recycled Material
- Impervious to water, mold and freeze-thaw
- Supports up to 750 lbs.
- Engagement 'bumps' warn of over-extension of pedestals
- Maximum elevation to 12" using couplers
- Preassembled and packaged in weather resistant boxes



INSTALLATION REQUIREMENTS

- Wood Tiles may not be appropriate for applications higher than 5 stories (50 feet) or in areas where the design wind speed exceeds 90 mph. Consult Hydrotech for more information.
- Loose laid STYROFOAM® insulation beneath the Wood Tiles must be properly ballasted in accordance with Tech Solutions 508.2 or other appropriate ballast design guidelines. Consult Hydrotech for more information.
- Wood Tiles cannot be used to replace concrete pavers or gravel for ballast in a PMR application. Consult Hydrotech for more information.
- The use of the FS1 Fastening Kit is required when installing Wood Tiles. The pedestal/wood tile system installs quickly and securely. The FS1 kit fastens wood tiles to the pedestals without penetrating or damaging the wood.

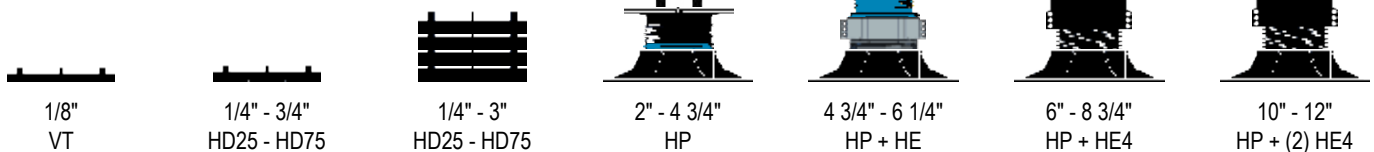
	Model Number	Description	Height Range	Max Height
	HP	Adjustable Pedestal (base unit)	2" - 4 3/4"	4 3/4"
	HE	Gray Extender		Adds up to 1 1/2"
	HE4	Black Extender		Adds up to 4" each

Tab Choices

	LT18	Tab	1/8" wide
	LT316	Tab	3/16" wide

Accessories

	HD25	Fixed Height Stackable Pedestals	1/4"	Tabs 1/8" or 3/16" wide
	HD50		1/2"	
	HD75		3/4"	
	VT	Ultra Low Height	1/8"	
	L0	Low Height Adjustable Pedestal	1 1/4" - 2"	2"
	B11	Flexible Rubber Shim	1/16"	
	PS1	Rigid Plastic Shim	1/8"	
	LD4	Leveler Disk	Stack up to 4	1/4" - 1" per foot slope
	FS1	Wood Tile Fastening Kit: Utilize to secure Bison Wood Tiles to pedestal system.		





151 N. Franklin - Chicago, IL



Godfrey Hotel - Chicago, IL



1333 New Hampshire - Washington, DC



The Water Club @ Borgata Hotel - Atlantic City NJ

In 1980, American Hydrotech, Inc. purchased the Construction Products Division of Uniroyal Ltd. in Canada, giving the company exclusive worldwide ownership for the manufacture and distribution of Monolithic Membrane 6125®.

One early strength of American Hydrotech, Inc., that continues today, is its established relationships with the architectural community. The highly respected architectural firm Skidmore, Owings and Merrill first used MM6125® in the late 1960's for the Finance and Management Center at the Illinois Institute of Technology in Chicago.

We have best-in-class brands that provide exceptional performance and owner value: Monolithic Membrane 6125®, our premium (flagship) waterproofing product has been successfully installed on the world's most prestigious structures in over 62 countries for 60 years.

In 2021, Sika Corporation acquired American Hydrotech for its position as the market leader in the development and production of premium waterproofing and roofing products and assemblies. Sika is a specialty chemicals company with a leading position in the development and production of systems and products for bonding, sealing, damping, reinforcing, and protecting in the building sector and motor vehicle industry. Sika has subsidiaries in 100 countries around the world and manufactures in over 300 factories and over 25,000 employees.



American Hydrotech Inc.

401 N. Michigan Ave., Chicago, Illinois 60611

800.877.6125 312.337.4998

www.hydrotechusa.com

This information is intended only for general conceptual purposes. It is based on data and knowledge considered to be true and correct. It is offered for the user's consideration, investigation and verification and is not intended to substitute for the advice provided by appropriate professionals. Hydrotech assumes no liability for the use of this information. The determination of the suitability and applicability of this information is the sole responsibility of the user.