

GardenEdge®



A SIKA COMPANY

GENERAL DESCRIPTION

The GardenEdge metal edge restraint is made of 0.10 inch thick unfinished aluminum or 0.0625 inch (16 gauge) unfinished stainless steel fabricated at a 90 degree angle with a slotted vertical leg to allow for drainage. FlexEdge® is available with fingered horizontal legs to accommodate curved configurations.

Leveling Strips are made of the same material and are available in varying heights. The strips are bolted to the GardenEdge where there is a need to create a level surface over a sloped deck. Allow one inch for overlap when attaching to GardenEdge.

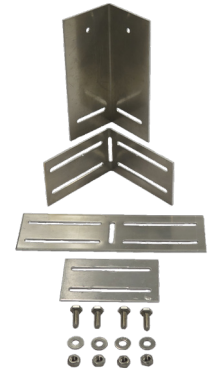
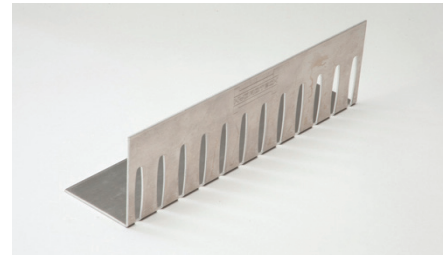
Custom color metals, finishes, and bending configurations are available.

BASIC USE

GardenEdge is specifically designed to provide a transition between Hydrotech’s LiteTop® growing media and elements like stone or concrete paver ballast at vegetation free-zones, building perimeters, roof penetrations, etc.

INSTALLATION

- GardenEdge shall be installed as indicated in Hydrotech’s Extensive Garden Roof® Installation Guidelines.
- GardenEdge can be placed either on top of the insulation layer or Gardendrain®, and is held in place by the weight of the LiteTop growing media placed over the horizontal leg.
- In-line and corner GardenEdge sections are connected with clip and corner assemblies of various heights and configurations. Clip and corner assemblies use bolts and nuts for the final connections.
- GardenEdge is not intended to be mechanically attached to or through the roofing membrane assembly.
- GardenEdge is not intended to be used to support a load, such as at the bottom of a sloped roof along the eave.
- To avoid “white rust” corrosion common in aluminum, avoid storing nested GardenEdge products in a wet environment. Hydrotech is not responsible for staining caused by this corrosion.
- GardenEdge is supplied in a standard mill finish aluminum. For areas where a higher aesthetic finish is desired, stainless steel GardenEdge is available. Power-coated finishes are also available.



TECHNICAL DATA

THICKNESS:	0.10 inch thick unfinished aluminum or 0.0625 inch thick (16 gauge) unfinished stainless steel
DIMENSIONS:	Vertical heights of 3.0 inches – 8.5 inches (custom heights also available) Available in 0.5 inch increments; 8 foot long sections
SLOTS:	0.375 inch effective slot mean diameter; 0.11 sq.in. total opening; 12 slots per linear foot
ACCESSORIES:	Corner pieces, clips and connection bolts are also available

LEED® INFORMATION

	Credit 4	Credit 5
Recycled Content (% by weight)	41.5 (pi)	
Manufacture Location		Evanston, IL
Extraction/Harvesting Location		Oswego, NY
VOC Content (g/L)		0

This information is intended only for general conceptual purposes. It is based on data and knowledge considered to be true and correct. It is offered for the user's consideration, investigation and verification and is not intended to substitute for the advice provided by appropriate professionals. Hydrotech assumes no liability for the use of this information. The determination of the suitability and applicability of this information is the sole responsibility of the user.