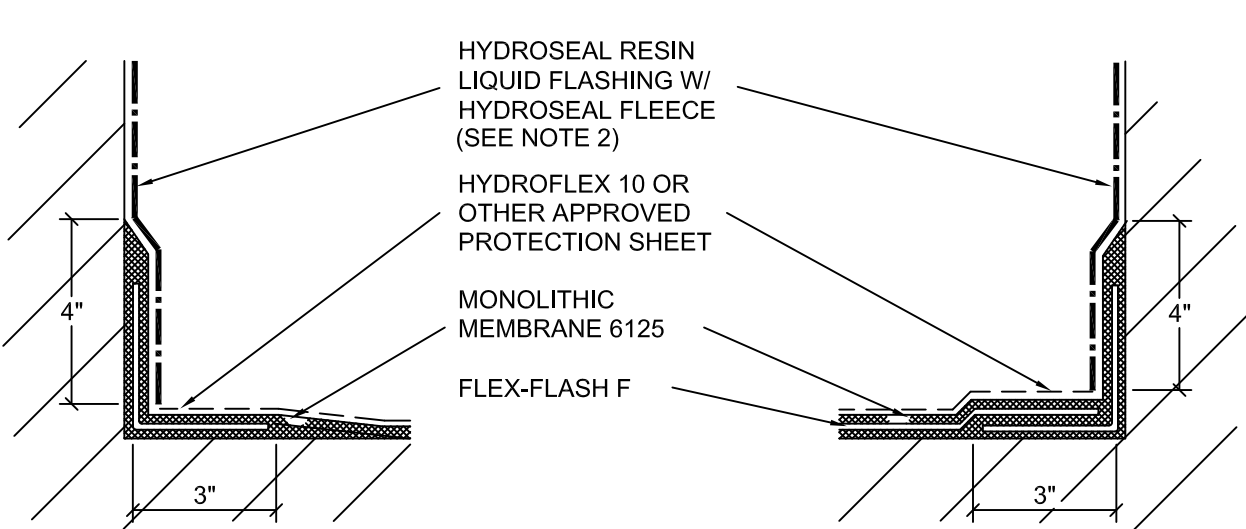
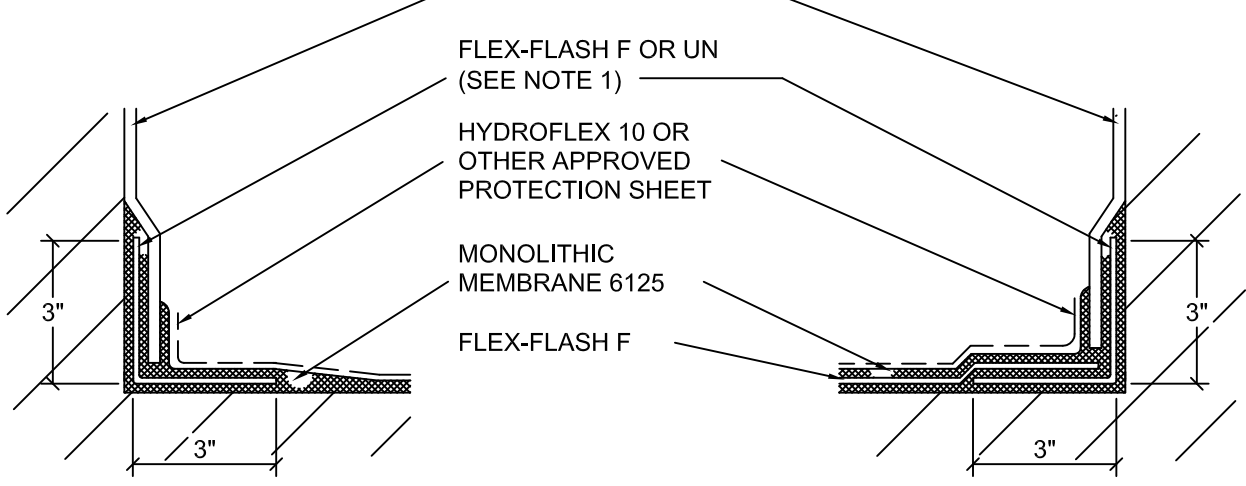
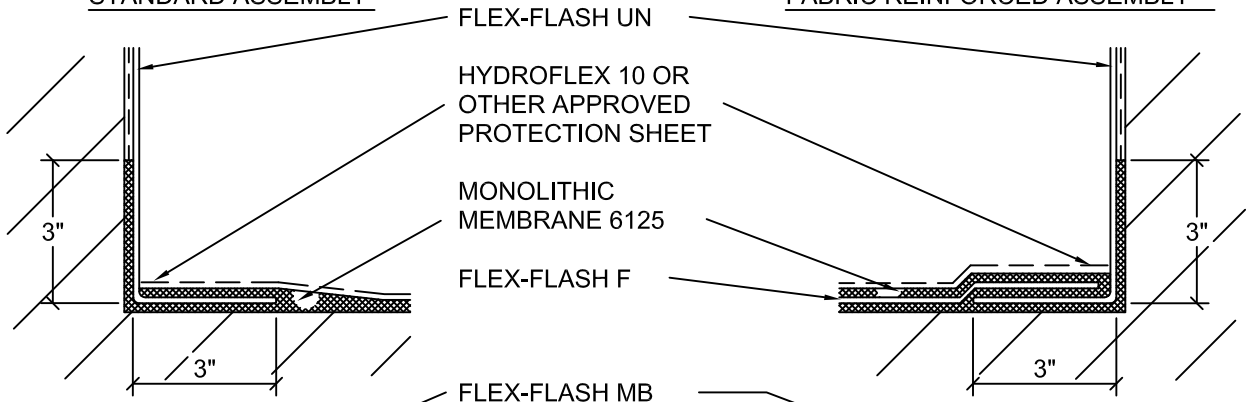


STANDARD ASSEMBLY

FABRIC REINFORCED ASSEMBLY



NOTES:

1. FLEX-FLASH F MAY BE USED AT ALL CONCRETE-TO-CONCRETE AND CONCRETE- TO-CONCRETE BLOCK TRANSITIONS. FLEX-FLASH UN MUST BE USED AT ALL OTHER TRANSITIONS (i.e., CONC.-TO-GYP. BOARD, GYP. BOARD-TO-GYP. BOARD, ETC.).
2. HYDROSEAL RESIN MUST EXTEND 4" MIN. ONTO THE APPROVED SUBSTRATE BEYOND THE MM6125 TERMINATION.



Monolithic Membrane 6125-FR
ROOFING SYSTEMS

AMERICAN HYDROTECH, INC.

ALTERNATE FLASHING CORNER TRANSITIONS

SCALE: NONE DATE: 10/24/19	R-12
-------------------------------	------

This information is intended only for general conceptual purposes. It is based on data and knowledge considered to be true and correct. It is offered for the user's consideration, investigation and verification and is not intended to substitute for the advice provided by appropriate professionals. Hydrotech assumes no liability for the use of this information. The determination of the suitability and applicability of this information is the sole responsibility of the user.